

# National Digital Literacy Programme (NDLP) – Device Information and Funding

Mr Adrial Tan (HOD ICT)

[adrial\\_tan\\_chong\\_jin@moe.edu.sg](mailto:adrial_tan_chong_jin@moe.edu.sg)





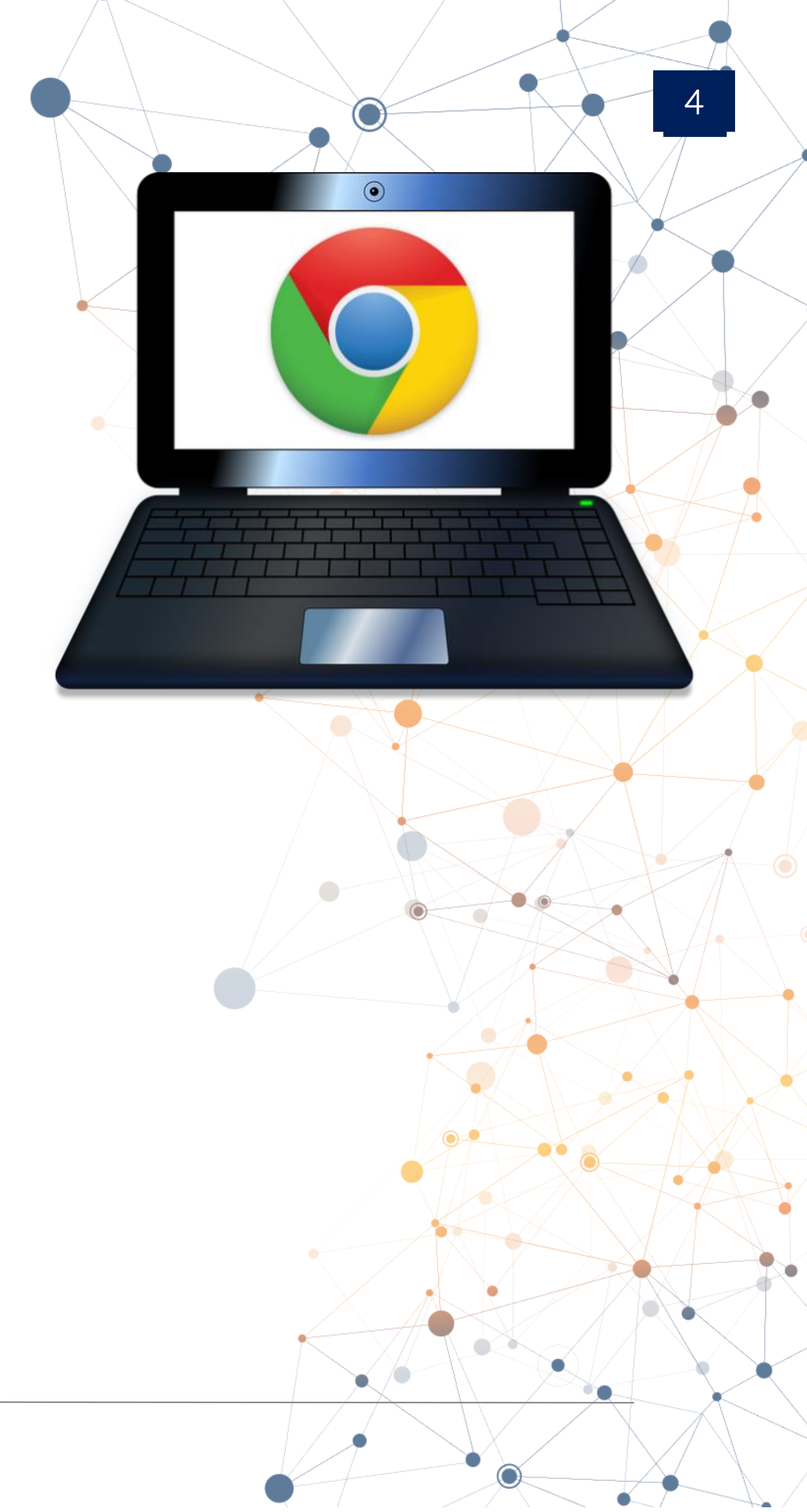
NDLP – Device Funding and Information

# Device Selection

## Convertible Chromebook

The school chose Chromebooks because of:

- Portability & durability
- Affordability
- Technological affordances offered by Chromebooks
  - Compatibility with MOE's Student iCON learning environment







NDLP – Device Funding and Information

# Device Selection

## Lenovo 500E Chromebook Gen 4 (Enhanced Bundle)



Price:

\$ 587.51 (incl GST)

### Device Specifications:

Intel N100CPU, 8GB RAM, 64GB HDD Storage, 12.2" WUXGA 1920x1200 touchscreen display, 720P HD Webcam Front with Mic + 5MP RGB 2nd Cam with Mic, 1.32kg, 1x HDMI 1.4, 1x USB-C 3.2 Gen 2, 2x USB 3.2 Gen 1, 1x Headphone / microphone combo jack (3.5mm), 1x Pen Slot, 1x Kensington Nano Security Slot

### Accessories:

Power Adaptor, Mouse, Stylus, Carrier Bag

### Warranty:

3 years carry-in

### Insurance:

3 years



# Insurance Coverage

The package includes a **3-year warranty, and 3-year insurance** which includes:

Insurance Coverage	Claimable
<ul style="list-style-type: none"><li>• Fire</li><li>• Lightning</li><li>• Power Surges</li><li>• Accidental e.g water spillage, drop etc</li><li>• Theft due to forcible entry</li><li>• Robbery</li></ul>	2 repairs or 1 replacement (3 year insurance)
* Accidental loss will <b>not</b> be covered by insurance.	





NDLP – Device Information and Funding

# Technical Support for Students' Devices

## 1. In-school ICT Technical Support in the following areas:

- Troubleshooting of device issues
- Solve connectivity issues

## 2. Lenovo Service Centre @ Tai Seng Centre (repair of devices)



**Location:**  
Tai Seng Centre,  
SmartCares Solutions  
3 Irving Road, #01-17  
Singapore 369522  
(Beside Tai Seng MRT station, Exit A)

**Service Centre Number:**

800 852 8100

**Service Centre Email:**

[lenovo@smartcares.com](mailto:lenovo@smartcares.com)

**Opening Hours:**

**Mon – Sat:**

1100 to 1900

**Sun and PHs:**

Closed





## Funding Support for Singapore Citizen (SC) Students

- **The cost of the device bundle can be paid using your child's/ward's Edusave account**, after setting aside provision for payment of second-tier miscellaneous fees.
- To ensure the affordability of devices, MOE has provided Edusave top-ups in 2020 to 2022 (\$200 in each year), and \$300 in 2023, to all eligible SC students in primary and secondary schools.
- This is on top of the annual \$290 credited into the Edusave account for Secondary School students and \$230 for Primary School students.



## Funding Support for Singapore Citizen (SC) Students

- For SC students who are on MOE Financial Assistance Scheme or whose family's monthly income meets the following criteria:

Gross Household Income (GHI)  $\leq$  \$3,000, or

Per Capita Income (PCI<sup>#</sup>)  $\leq$  \$750

MOE will subsidise 50% of device bundle cost or \$350, whichever is lower.

- The remaining amount will be payable from the students' Edusave account. If there is insufficient balance in the students' Edusave account for the remaining amount, school will provide additional subsidy so that the cash out-of-pocket (OOP) is \$0.

- **#PCI is GHI divided by the number of household members.**





# Funding Scenario: Student A (SC)



**Lenovo 500E  
Chromebook Gen  
4 (Enhanced  
Bundle)  
\$ 587.51**

Student A (SC on MOE FAS)  
GHI ≤ \$3,000 or PCI ≤ \$750

Device Bundle Cost	\$ 587.51
Student Subsidy (50%)	\$ 293.80 (rounded up to nearest 10 cents)
Balance payment	\$ 293.71
Available Edusave Balance (After setting aside for 2nd-tier misc fees)	\$ 200.00 before deduction \$ 200.00 will be deducted
Additional Subsidy	\$ 93.71
Cash Out-of-pocket	<u>\$ 0.00</u>





## Funding Support for Singapore Citizen (SC) Students

- For SC students whose family's monthly income is:

$\$3,000 < \text{Gross Household Income (GHI)} \leq \$4,400$ , or

$\$750 < \text{Per Capita Income (PCI)} \leq \$1,100$

MOE will subsidise 30% of device bundle cost or \$200, whichever is lower.

- The remaining amount will be payable from the students' Edusave account. If there is insufficient balance in the students' Edusave account for the remaining amount, school will provide additional subsidy so that the cash out-of-pocket (OOP) is not more than \$50.



# Funding Scenario: Student B (SC)



**Lenovo 500E  
Chromebook Gen  
4 (Enhanced  
Bundle)  
\$ 587.51**

Student B (Non MOE-FAS SC from lower income family)  
\$3,000 < GHI ≤ \$4,400 or \$750 < PCI ≤ \$1,100

Device Bundle Cost	\$ 587.51
Student Subsidy (30%)	\$ 176.30 (rounded up to nearest 10 cents)
Balance payment	\$ 411.21
Available Edusave Balance (After setting aside for 2nd-tier misc fees)	\$ 200.00 before deduction \$ 200.00 will be deducted
Additional Subsidy	\$ 161.21
Cash Out-of-pocket	<u>\$ 50.00</u>





## Funding Support for Singapore Citizen (SC) Students

- SC students whose family's monthly income is:

Gross Household Income (GHI) > \$4,400, or  
Per Capita Income (PCI) > \$1,100

no subsidy will be provided.

- Parents/Guardians can use their child's/ward's Edusave or cash to defray the device bundle cost.



# Funding Scenario: Student C (SC)



**Lenovo 500E  
Chromebook Gen  
4 (Enhanced  
Bundle)  
\$ 587.51**

Student C (Not eligible for subsidy)  
GHI > \$4,400 or PCI > \$1,100

Device Bundle Cost	\$ 587.51
Student Subsidy (0%)	\$ 0.00
Available Edusave Balance <small>(After setting aside for 2nd-tier misc fees)</small>	\$ 200.00 before deduction \$ 200.00 will be deducted
Additional Subsidy	\$ 0.00
Cash Out-of-pocket	<u>\$ 387.51</u>





NDLP – Device Information and Funding

## Funding Support for Non-Singapore Citizen Students

- Permanent residents (PR) and international students (IS) who need support could apply for subsidies, particularly for those whose Gross Household Income (GHI) is below \$4400 or Per Capita Income (PCI) is below \$1100.
- For more details, please approach the school.

# What's Next?





NDLP – Device Information and Funding

# For Singapore Citizen (SC) Students

Time Frame	Activity
By 26 Jan 2024	<p>Submit Letter to Parents for Procurement which includes the following annexes:</p> <ul style="list-style-type: none"><li>• Annex D: Intent to Purchase Personal Learning Device (PLD)</li><li>• Annex E: Authorisation Form</li><li>• Annex F: Standing Order for Use of Edusave Account</li></ul> <p>Forms to be submitted through the hardcopy form distributed to students.</p>
Mar 2024	Collection of devices by students



# For Permanent Residents and International Students

Time Frame	Activity
By 26 Jan 2024	<p>Submit Letter to Parents for Procurement which includes the following annexes:</p> <ul style="list-style-type: none"><li>• Annex D: Intent to Purchase Personal Learning Device (PLD)</li><li>• Annex E: Authorisation Form</li></ul> <p>Forms to be submitted through the hardcopy form distributed to students.</p>
Feb 2024 (Date to be confirmed)	<p>Parent/Guardian to make payment via Giro/PayNow/ Cheque/etc.</p>
Mar 2024	<p>Collection of devices by students</p>





NDLP – Device Information and Funding

# Collection of Devices

Your child/ward will be collecting his/her device in school.

**Parents/Guardians (or adult proxy)** will **not** be able to collect the PLD with your child/ward from the school.

All devices come with a 7-day one-to-one exchange policy. Students will need to keep the packaging that comes with the device for one-to-one exchange.



# Important Contacts / Helplines

To find out more about...	Contact
Edusave balance	6260 0777
Financial assistance School Admin Managers: <ul style="list-style-type: none"><li>• Ms Susan Lim</li><li>• Mdm Jaya</li></ul> Admin Executive: <ul style="list-style-type: none"><li>• Ms Hazlin</li></ul>	6385 1589



# FAQs





# FAQs

## 1. Is it compulsory for students to buy the PLDs?

We strongly encourage all students to purchase the school prescribed PLDs so that they may benefit from the various learning experiences that are enhanced through the use of EdTech during lessons. Without a PLD, your child will not be able to fully benefit from the rich learning experiences that our teachers design for them.





# FAQs

2. I already have a device for my child. Can I let me child use the device instead of purchasing a new one?

You may use your own device as a PLD if it meets the requirements of our existing ICT ecosystem. We are currently only able to support Chromebooks running on the Chrome OS. We will require your child to bring the device to our ICT Managers to carry out an assessment of its suitability. If the device that you have has been approved for use, we will need parents to agree to the installation of a Device Management App on the device for managing the use of the device by students during and after school hours. Refer to Annex A for details of the DMA.



# FAQs

3. I have an iPad or a Windows-based laptop. Can I use this as my child's learning device.

You will **not** be able to use iPads or Windows-based laptops as the version of the DMA used by the school does not support them. Without the support of the DMA, teachers will not be able to effectively manage learning using the devices during school hours.



# Q&A





Thank you

